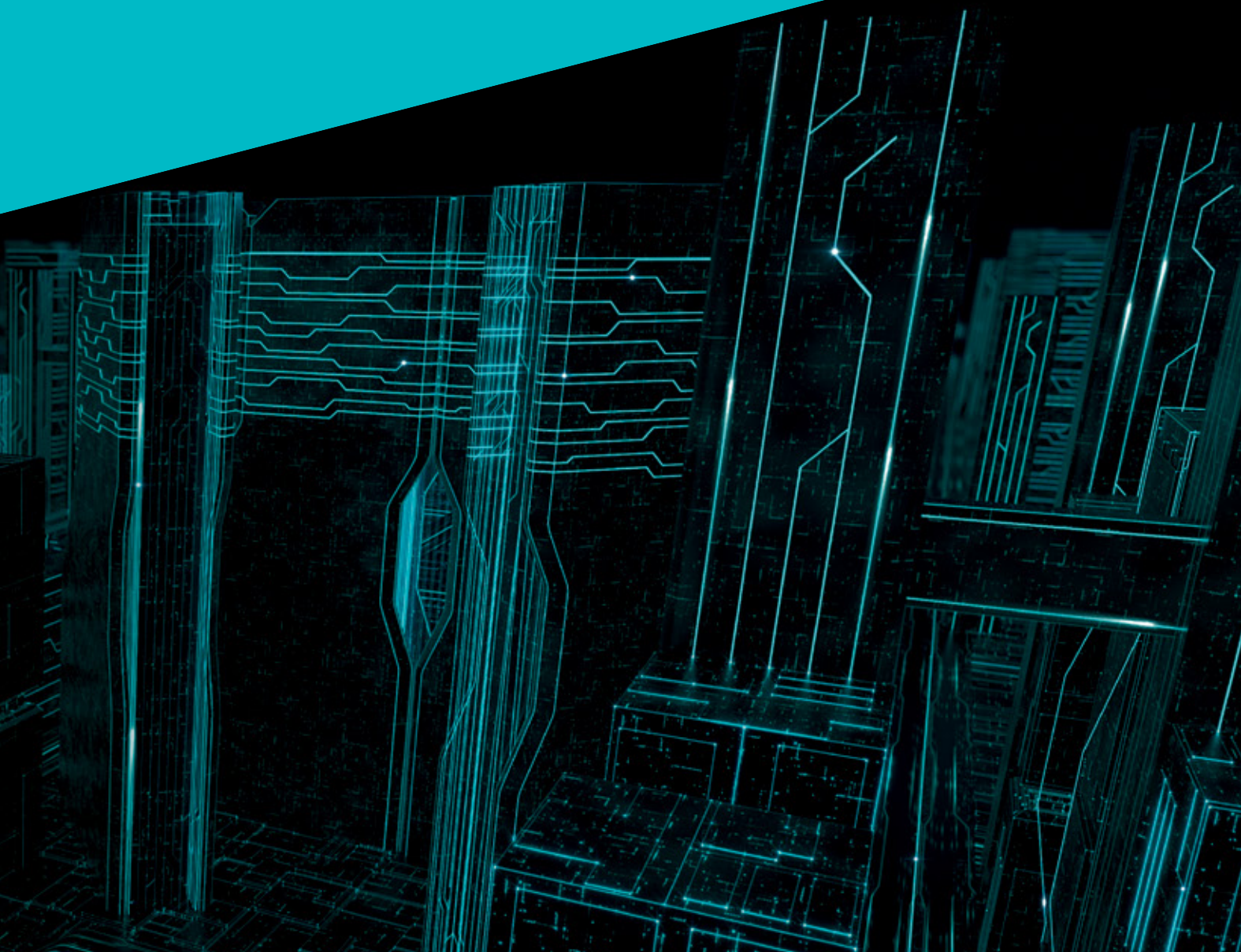




# DYNAMIC THREAT DEFENCE

**Prevent zero-day threats** with powerful  
cloud-based sandboxing.



# The ESET difference

## Multi-Layered Protection

Within Dynamic Threat Defence, ESET utilises three different machine learning models once a file is submitted. After that, it runs the sample through a full sandbox which simulates user behaviour to trick anti-evasive techniques. Next, a deep learning neural network is used to compare the behaviour seen versus historical behavioural data. Last but not least, the latest version of ESET's scanning engine is used to take everything apart and analyse for anything unusual.

## Full Visibility

Every analysed sample is listed in ESET's Security Management Centre console with various types of information about the sample itself and its origin. All information is displayed in an easy-to-understand form. Not only does ESET simply display samples that were sent to ESET Dynamic Threat Defence but also everything that is sent to ESET's Cloud Malware Protection System – ESET LiveGrid®.

## Mobility

Nowadays customers are constantly travelling and not on premise, which is why ESET Dynamic Threat Defence is able to analyse files no matter where users are. The best part is that if anything malicious is detected, the whole company is immediately protected.

## Unparalleled Speed

Every minute counts, which is why ESET Dynamic Threat Defence is able to analyse the majority of samples in under five minutes. If a sample has been previously analysed, it is simply a few seconds until all devices at the organisation are protected.

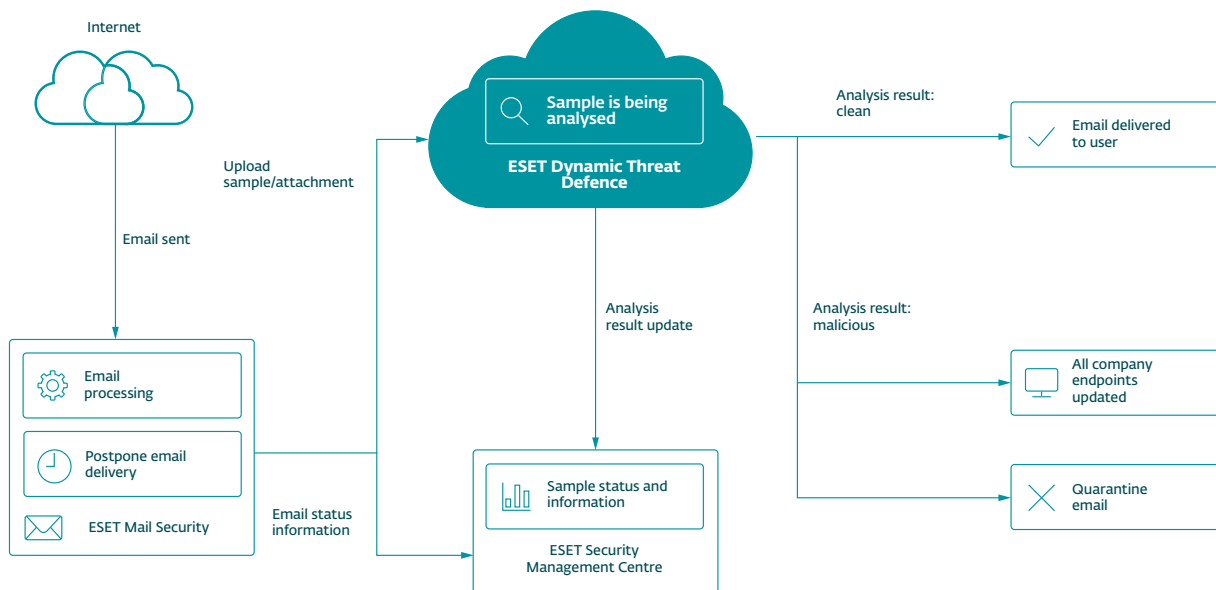
## Proven and Trusted

ESET has been in the security industry for over 30 years and continues to develop its technology to stay one step ahead of the newest threats. This has led ESET to be trusted by over 110 million users worldwide. The technology is constantly scrutinised and validated by third-party testers who show how effective the approach is at stopping the latest threats.

ESET Dynamic Threat Defence provides another layer of security for ESET products like Mail Security and endpoint products by utilising a cloud-based sandboxing technology to detect new, never-before-seen types of threat. This sandbox consists of multiple types of sensors that complete static analysis of code, deep inspection of the sample with machine learning, in-memory introspection and behaviour-based detection.

# How ESET Dynamic Threat Defence works

With ESET Mail Security



Complete visibility – see all files sent to ESET LiveGrid®





# ESET Dynamic Threat Defence technical features

## Automatic Protection

Once everything is set up, there is no action needed by the admin or the user. The endpoint or server product automatically decides whether a sample is good, bad or unknown. If the sample is unknown, it is sent to ESET Dynamic Threat Defence for analysing. Once analysis is finished, the result is shared and the endpoint products respond accordingly.

## Tailored Customisation

ESET allows per-computer detailed policy configuration for ESET Dynamic Threat Defence so the admin can control what is sent and what should happen based on the receiving result.

## Manual Submission

At any time, a user or admin can submit samples via an ESET compatible product for analysis and get the full result. Admins will see who sent what and what the result was directly in the ESET Security Management Centre.

## Mail Security Protection

Not only does ESET Dynamic Threat Defence work with files, but it also works directly with ESET Mail Security to ensure that malicious emails are not delivered to your organisation. To ensure business continuity, only emails coming from outside of the organisation can be sent to ESET Dynamic Threat Defence for inspection.

*"The biggest thing that stands out is its strong technical advantage over other products in the marketplace. ESET offers us reliable security, meaning that I can work on any project at any time knowing our computers are protected 100%."*

— Fiona Garland, Business Analyst Group IT;  
Mercury Engineering, Ireland; 1,300 seats

## ESET IN NUMBERS

**110m+**  
users  
worldwide

**400k+**  
business  
customers

**200+**  
countries &  
territories

**13**  
global R&D  
centres