


SOLUTION OVERVIEW



CLOUD ADMINISTRATOR

Manage your network security for up to
250 seats from a single cloud-based console

CYBERSECURITY
EXPERTS ON
YOUR SIDE



With ESET Cloud Administrator, you can manage your company network security without the need to buy, install or maintain additional hardware. This solution is offered as a service to ESET business customers with up to 250 seats, reducing the total cost of ownership of the security solution and allowing you to concentrate on other important tasks. It is accessible anytime and anywhere via a web-based console. Setup of ESET Cloud Administrator and deployment of ESET security products is fast and easy, and gives you visibility into overall network security.

What's in it for you?

SOFTWARE AS A SERVICE

ESET Cloud Administrator is offered as a service that runs in the cloud. It does not require dedicated hardware, or installation configuration or maintenance of a remote management console. Setup, server cleanups, upgrades and certificate management are all done automatically in the background, without any need for user input. Users will always benefit from the latest features and improvements without any attention needed.

CREATE MANAGED NETWORK

Building a managed security network starts with connecting endpoints to a remote management console. In ESET Cloud Administrator, live installers are created that contain all important information, including the license key, and deployed to endpoints. After the successful installation of an ESET business product on an endpoint, the security product automatically reports to the console, thus establishing a monitored network.

GET VISIBILITY TO ENDPOINT STATUS

Endpoints continuously report to ESET Cloud Administrator whenever they connect to internet. The status of the established network is displayed in interactive dashboards that translate data from endpoints into comprehensible charts and tables. Administrators can monitor the overall status in the main dashboard or drill down to more specific categories to oversee the status of computers, threats or quarantined items.

EXECUTE AND AUTOMATE

Administrators can remotely configure security products on connected endpoints and execute tasks on machines immediately. They can also create policies and schedule them to be applied either upon specified triggers or as soon as the endpoints connect to the console. The tasks and policies can be applied to specific computers or to static or dynamic groups.

BE NOTIFIED IN REAL TIME

One great advantage of having a managed security network is that your administrator can receive warnings even while off duty—and, simply by setting event notifications to go to specific recipients, can ensure that threats attacking endpoints connected to the network will always be responded to as quickly as possible. Multiple reports can be created to visualize network status, and these can be printed or shared in digital form.



ESET Cloud Administrator supports the newest versions of the following ESET security products:

ESET Endpoint Antivirus
for Windows and OS X/macOS

ESET Endpoint Security
for Windows and OS X/macOS

ESET File Security
for Microsoft Windows Server

ESET Mail Security
for Microsoft Exchange Server

ESET Mail Security
for IBM Domino

ESET Security
for Microsoft SharePoint Server

What's inside?

WEB CONSOLE

The data stored in ESET Cloud Administrator is viewed on a web console that is accessible via a public internet connection. From this central location, users can view data that has been organized into dashboards and lists, and receive commands from the administrator. ESET Cloud Administrator enables the management and organization of a network of managed devices into static and pre-defined dynamic groups.

LIVE INSTALLER

A small, easily downloadable, preconfigured package contains all the necessary components—the management agent and the ESET endpoint security product. It installs the security product on the endpoint, automatically connects to the proper cloud instance and activates itself with a valid license. The live installer can be downloaded directly to the endpoint, or a link to the live installer can be sent via email or any other communication tool.

SECURITY PRODUCTS

ESET security products protect client computers and servers from threats. ESET Cloud Administrator supports the newest versions of the following ESET security products: ESET Endpoint Antivirus for Windows and OS X/macOS; ESET Endpoint Security for Windows and OS X/macOS; ESET File Security for Microsoft Windows Server; ESET Mail Security for Microsoft Exchange Server; ESET Mail Security for IBM Domino; and ESET Security for Microsoft SharePoint Server. Users can select either the latest available version or the version immediately prior to it.

REMOTE DEPLOYMENT TOOL

This is a tool that can remotely deploy ESET Cloud Administrator live installer to the network. It has the capability to map the network remotely, sync with Active Directory or support importing of targets on which the product will be deployed.

ESET BUSINESS ACCOUNT

ESET Business Account is a licensing management platform designed to help business customers manage their licenses. It is the primary entry point for ESET cloud services, including ESET Cloud Administrator.

ESET Cloud Administrator allows users to:

- ✓ Manage licenses easily

- ✓ Create company users and define their level of access to the Business Account

- ✓ Generate a 30-day trial license for managing the products via ESET Cloud Administrator or on premise via ESET Security Management Center

- ✓ Activate ESET Cloud Administrator to manage company network security

Why is it so good?

EASY SETUP

After activation of ESET Cloud Administrator, the user is introduced to basic functions via an “on-boarding wizard” that demonstrates how to add computers, deploy the security product and create a protected network. After successful deployment, the device becomes instantly visible in ESET Cloud Administrator.

ONE-CLICK ACTIONS

ESET Cloud Administrator allows several one-click actions for easier product management. Administrators can use one-click actions to quickly upgrade security products across the entire security network to the latest versions, navigate to threats or perform other tasks, including activation, computer reboots and OS updates.

STATIC AND DYNAMIC GROUPS

Each device is located in a single static group that can be created according to user needs. Static groups can be nested in a tree structure. Dynamic groups show devices based on predefined criteria and are essential for automation, in which policies are applied and tasks are executed only when the device matches the inclusion criteria.

MANAGEMENT OF USERS

Devices in a secured network can be assigned to specific users. This feature gives the administrator the option of filtering computers based on who is using them (that is, by visualizing user details and device access).

NOTIFICATIONS

Administrators need to be informed immediately of issues within the security networks they maintain so that they can trigger the proper actions when needed. ESET Cloud Administrator allows administrators to set up predefined event notifications that will be sent to specified email addresses immediately and shown in the dashboard.

POLICIES, REPORTS AND TASKS

ESET Cloud Administrator comes with a preconfigured set of policies for the administrator’s convenience. These can be assigned to groups or individual computers. The administrator can view reports that are divided into categories and accessed with a single click. All commands that will be executed on a managed computer are sent via a client task, which can be created from the context menus, toolbars and the dedicated “Tasks” section, then scheduled and executed according to a defined trigger.

INCIDENT OVERVIEW DASHBOARD

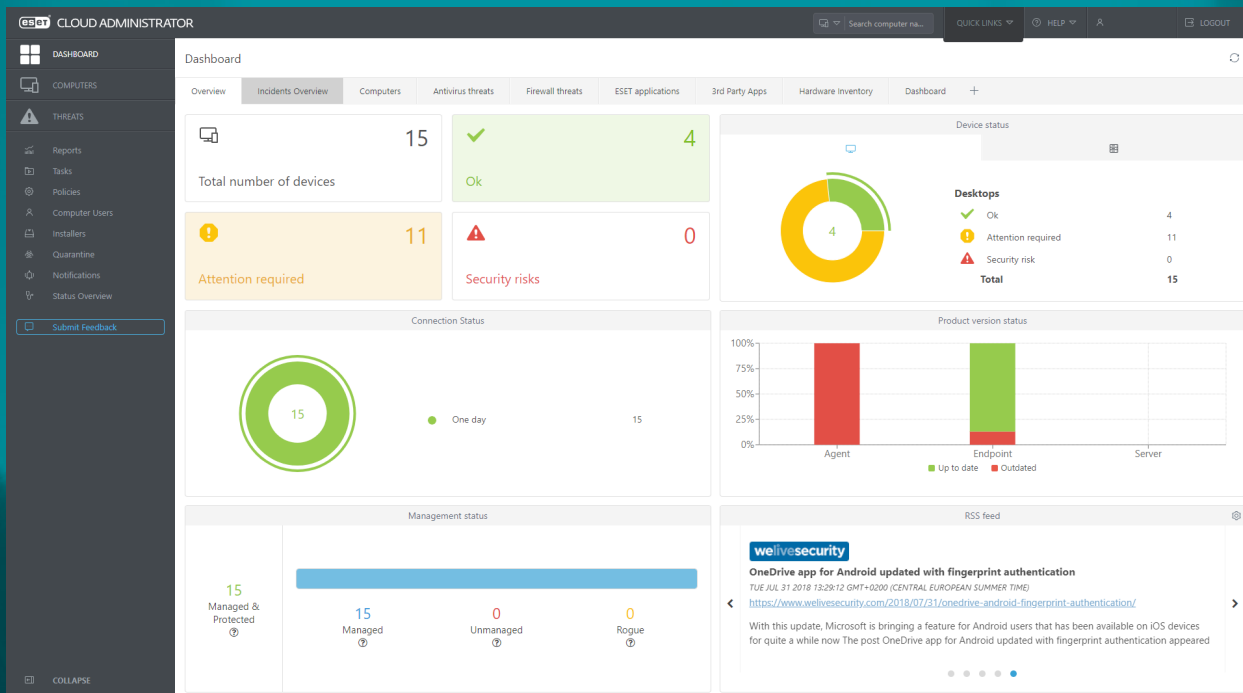
The security-centric dashboard displays the most recent network security status. It shows incident timelines, groups and detections on computers, and can even display the top 10 computers and users for whom security incidents have been reported.

HARDWARE INVENTORY

ESET Cloud Administrator collects and displays data about hardware installed on endpoints connected to the security network. With the capability of displaying data about CPU, RAM, monitors, disk drives, input devices and printers, including vendors, models, and serial numbers, it can serve as an overview of the company inventory.

CLIENT DETAILS

ESET Cloud Administrator displays comprehensive information about the client: to what dynamic group it belongs, what the hardware and operating system are, and who the user is. The information is shown on interactive tiles and organized into categories that highlight unresolved issues.



Dashboard from the ESET Cloud Administrator

TRY BEFORE YOU BUY

Test our cloud-based remote management. Experience the reliability, convenience and easy management of ESET best-in-class endpoint protection. Register your company with **ESET Business Account** to get a free trial license for up to 25 seats.



ENJOY SAFER TECHNOLOGY®

ESET IN NUMBERS

110M+
users
worldwide

400K+
business
customers

200+
countries and
territories

13
global R&D
centers

For more than 30 years, ESET® has been developing industry-leading IT security software and services, delivering instant, comprehensive protection against evolving cybersecurity threats for businesses and consumers worldwide. ESET is privately owned. With no debts and no loans, we have the freedom to do what needs to be done for the ultimate protection of all our customers.

www.eset.com